

Part#K-92/91: Fireview/Classic Knob & Latch Kit

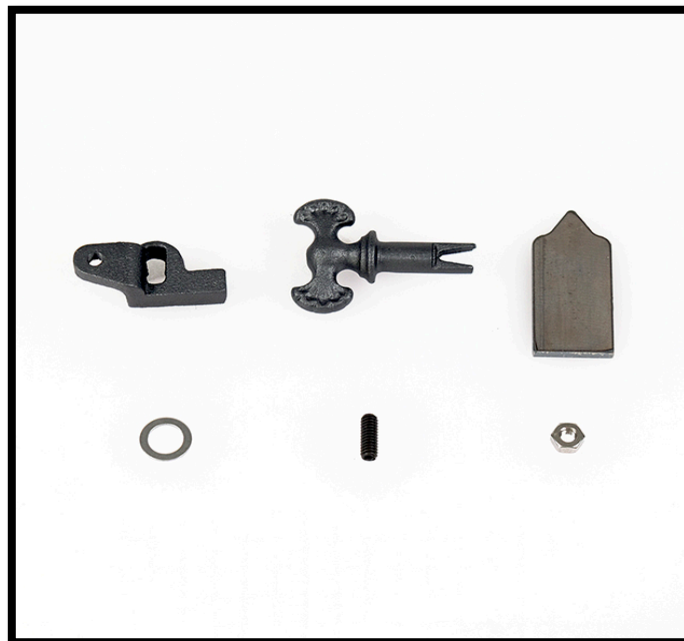
Rev. Date 7/23/2021

Parts Needed:

- (1) K-91/92 Knob & latch kit
 - Fancy knob
 - Latch
 - Set screw
 - lock nut
 - Washer
 - Spreader tool

Tools Needed:

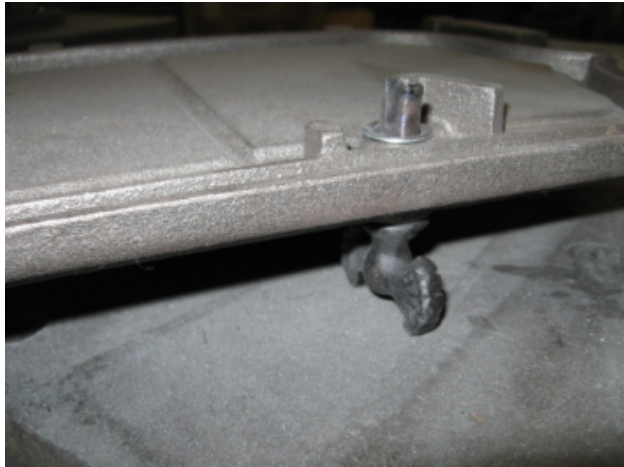
- 7/16" Wrench
- W-91 Knob-1/8" Hex key wrench
- W-92 Latch-spreader tool (Included)
- W-2523 Shim
- Ball peen hammer



1. Make sure the stove is cool.
2. Remove the door from the frame by pulling straight up on the door. The two pins holding the door to the frame will lift up and out of the hinges. (You may need to tap the bottom of the door to get started.)



3. Remove the old latch and knob. Install new knob through the hole in the door. Place the door face down on a hard work surface. Position the knob so that it is running parallel to the bottom edge of the door.



4. Place the shim and then the latch onto the shaft of the knob. Orient the latch so the set screw and lock nut are toward the top of the door.



5. Use the provided spreader tool and a ball peen hammer to spread the “fingers” of the knob outward to secure the latch. Spread them wide enough to hold the latch firmly. Do not over tighten. There should be some play in the knob.



6. Place the door back on the door frame. Tap the hinge pins down all the way.
7. Test the seal of the door by closing a strip of paper in various locations around the door, and pull on the paper. There should be enough resistance on the paper to curl it slightly. If it is not tight enough then adjust the set screw on the latch. Use a 7/16" wrench to loosen the lock nut, and a 1/8" hex key wrench to turn the set screw. Tighten the lock nut after proper tension is achieved.



8. Enjoy your stove!

We need your help! Woodstock Soapstone Co. takes pride in providing the highest quality products as well as the best customer service in our industry. We welcome your suggestions and input to help us achieve these goals. If you have any comments to improve our products, service, and information provided in these instructions please contact us at (800) 866-4344 or info@woodstove.com. Thank you!